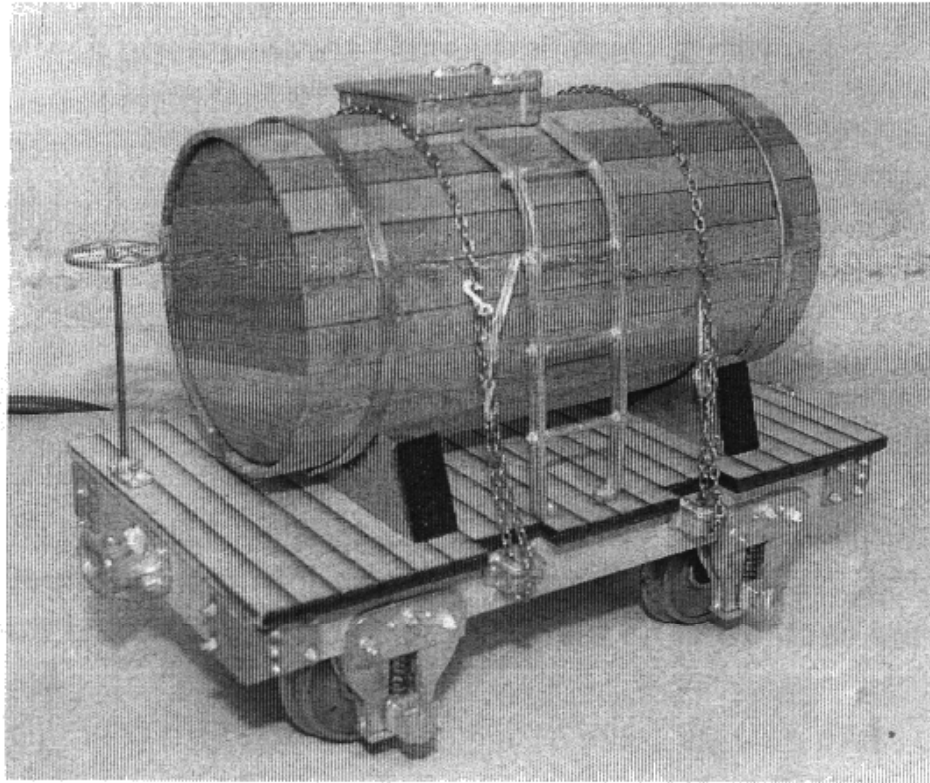


OZARK MINIATURES **1:20.3**
Clear Creek Mining Series
7517 10' WATER CAR KIT



**Tools needed to
assemble the kit:**

2-bar clamps
4-spring clamps
Exacto knife
Pin vise
1/16 " drill bit
1/8" drill bit
Rubber bands
Wire cutters
Needle nose pliers

This 10' water tank car is sure to be a hit on your layout. Fast and easy to assemble. Includes all casting, wood is precut, sprung journals, chain and binders, Sierra Valley wheels link and pin couplers.

Kit is manufactured and marketed by Ozark Miniatures
Made in the USA.

Models and designed by MooreWay Models LLC.

Instructions

- 1) Find and identify the wood parts for the kit. (fig 1)
- 2) Glue parts a & b together as shown in figure 2 to form the base assembly
- 3) When the base assembly has dried, glue it to the non-scribed side of the floor. It should be centered in between the stake pocket notches. (fig 2)
- 4) While the glue is drying on the base assembly, assemble the flap lid journal set per instructions included with it. Once the journals are assembled now is a good time to blacken or weather the cast parts. (See tips for cast parts paper)
- 5) Next, glue the corner braces on the car with ca cement (super glue). (fig 4)
- 6) When the ca cement is dry, use a pin vise and 1/16" bit to drill out the holes in the corner braces for the bolt details. Then glue the bolt details into place with ca cement. (fig 5)
- 7) Next, measure in 3/4" from both ends and attach the flap lid journals to the base assembly with ca cement on one side. You may need to clamp them in place while they dry. (fig 6)
- 8) Now, insert the axels into the flat lid journals (fig 7) and then glue the journals onto the other side. **NOTE: it is important that the journals are glued on exactly across from each other so the wheels will run smooth and true.** See figure 8
- 9) Next, attach the stake pockets centered under the notch in the floor. (fig 9)
- 10) Finally, you will need to find the center of the end beams and drill a 1/8" hole for the couplers and glue them in place with ca cement. (fig 10) You may also need to drill out the pin holes in the couplers with a 1/16" bit.
- 11) The final step is to drill a 1/16" hole in one end of the floor for the brake wheel assembly. Note you may need to enlarge the hole in the brake wheel and the lock pawl. Then glue them in place with ca cement.

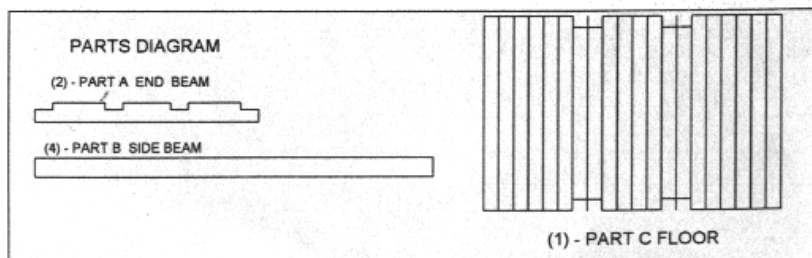


Figure 1

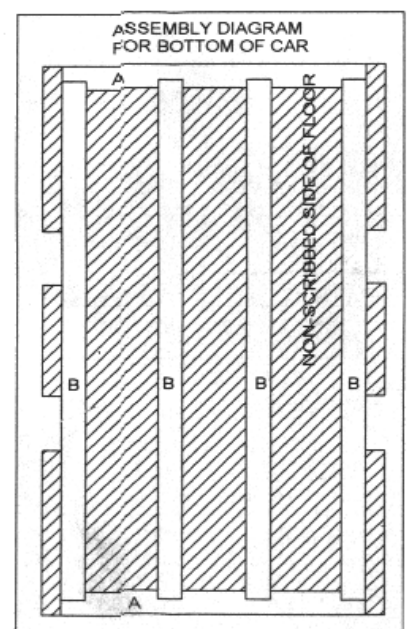


Figure 2

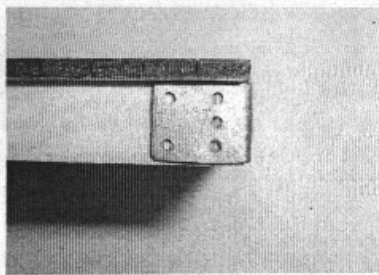


Figure 4

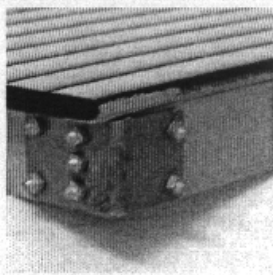


Figure 5

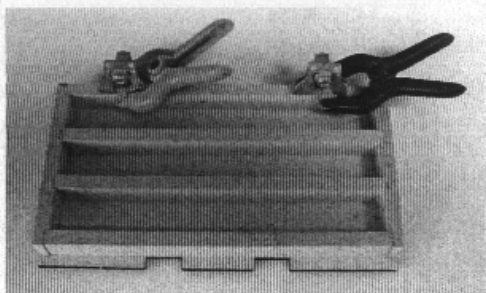


Figure 6

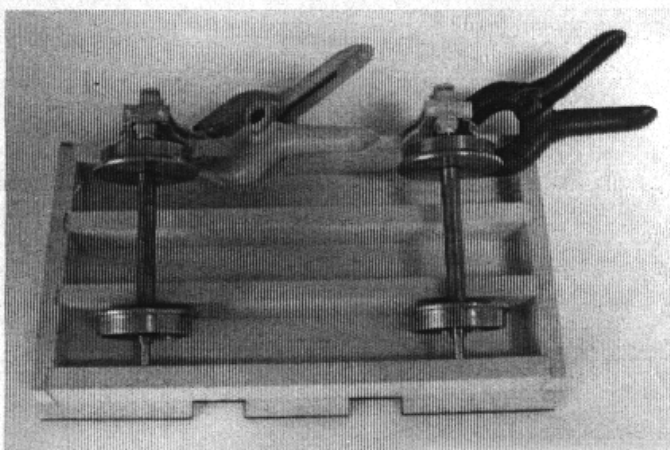


Figure 7

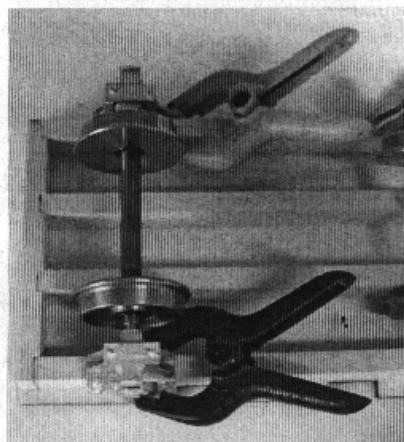


Figure 8

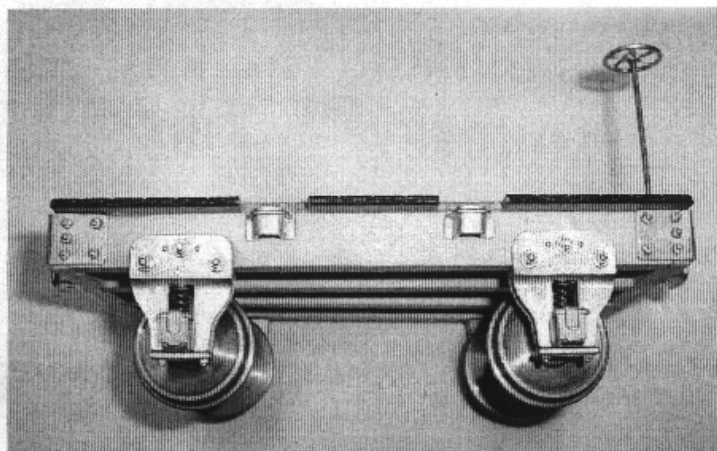


Figure 9

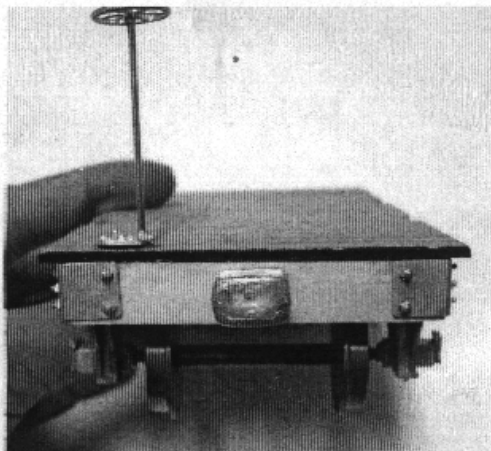


Figure 10

- 12) Find the PVC pipe and glue the two round ends onto it with CA cement.
- 13) Line up the wood slats for the tank against a straight edge and run two strips of masking tape as shown.
- 14) Glue the wood slats around the PVC pipe with CA cement and secure with the tape while drying.
- 15) Remove the tape carefully and wrap the brass banding around the tank to form it. Cut to fit and make bends on each end, glue it in place. Use rubber bands or clamps to secure in place while drying.
- 16) Glue the tank on the tank supports with wood glue and glue onto the flat car.
- 17) Using CA cement, attach the strap bolt fastening detail.
- 18) Assemble the roof hatch per instructions and attach it to the top of the tank. Sand to fit.
- 19) Assemble the chain binders by putting a hook on both ends and bending the brass rod to hold the hook in place.
- 20) Put the chain over the tank and loop it through the stake pockets. Secure it with a hook on one end and chain binder on the other.
- 21) Bend the ladder around the tank into position and glue it into place. See figure 20.
- 22) Assemble the water valve and position it on the end of the tank.

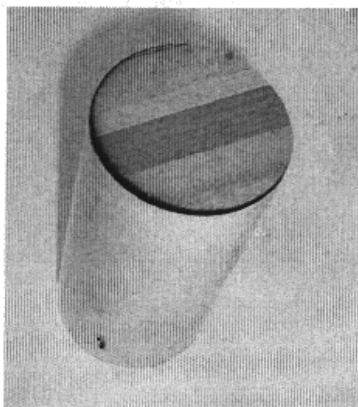


Figure 12

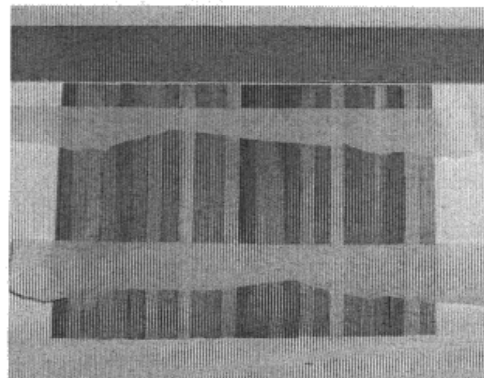


Figure 13

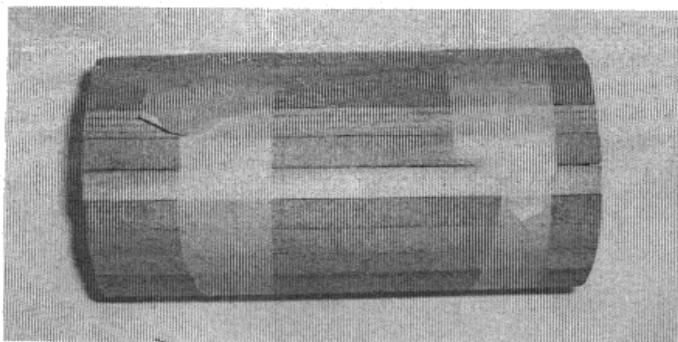


Figure 14

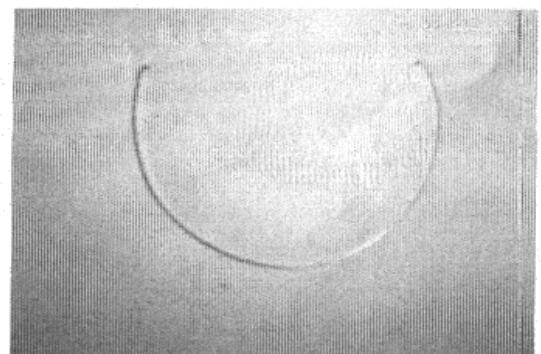


Figure 15a

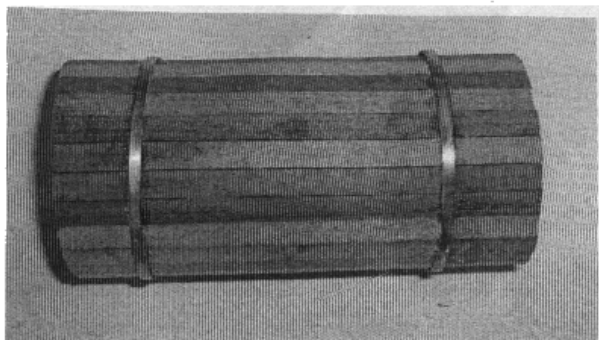


Figure 15b

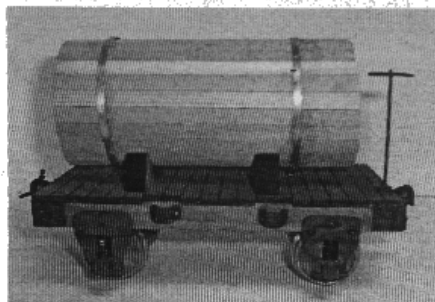


Figure 16

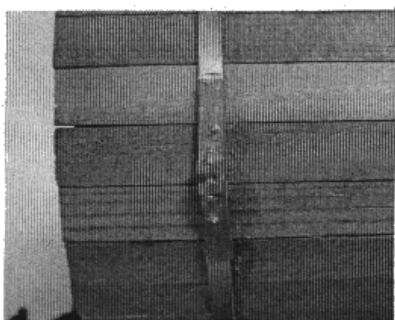


Figure 17

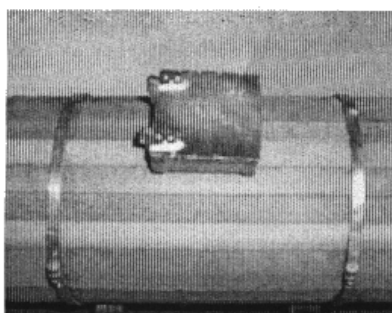


Figure 18



Figure 19

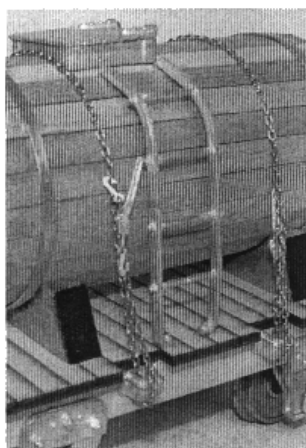


Figure 20

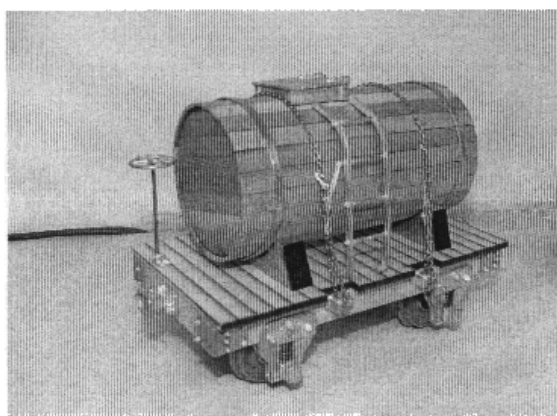


Figure 22

**CLEAR CREEK MINING SERIES
10' WATER CAR (7517)**

	QTY	PART #	DESCRIPTION
	1	7512-1	CAR BASE WOOD PACKAGE
	1	7512-2	WHEEL AND JOURNAL SET
	1	7512-3	FLAT CAR DETAIL PACKAGE
	1	7517-1	WATER CAR WOOD PACKAGE
	1	7517-2	WATER CAR DETAIL PACKAGE
	1		7515 INSTRUCTION SHEET
	1	GLUE	GLUE PACKAGE

Assembly of flap lid journals

SUGGESTED CEMENT: Cyanoacrylate (GAP FILLING).

Using a hobby knife or small file, clean all of the flash and parting lines from the castings.

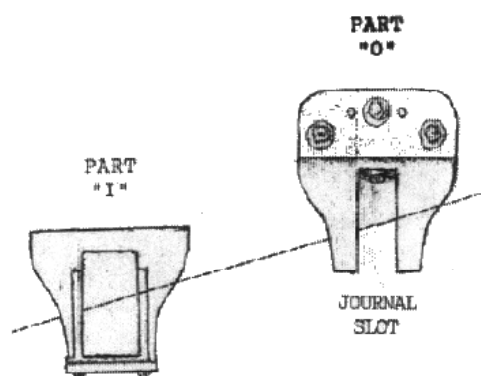
The journals are cored, .170" deep for a 1/8" axle. They can be drilled deeper to a maximum of 1/2". Fit the journals to part "O". They must slide up and down freely. Keep them paired. Spring seat on journal (UP).

Test fit part "I" to the back of part "O". When the fit is good, cement part "I" to the back of part "O". **NOTE:** Be sure journals are in place. Keep cement out of journal area.

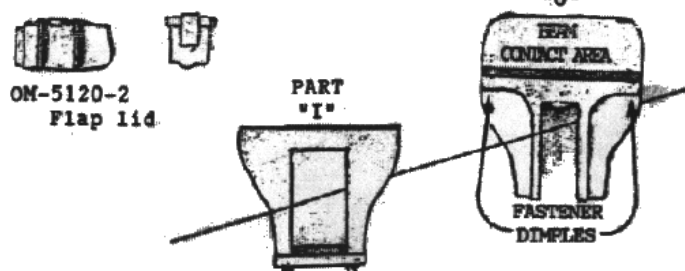
After the cement has dried, install the springs with a tweezers. Run a string thru the coils to keep from loosing them. Now cement the journal lid to the face of the journal. The journal assembly is now complete.

Additional fasteners may be used to secure the assembly to the chassis beam. A (NAIL, SCREW OR BOLT) may be put into the beam at the dimples shown on the back view of part "O". Drill at the dimple the size of your fastener. Clean the beam contact area with a small file and cement the journal in place on the beam and secure with your fastener thru the holes drilled previously.

FRONT VIEW



REAR VIEW



Thank you for purchasing this kit. For questions about assembling this kit, missing parts or if you need extra parts for this or another project contact Ozark Miniatures at farside@infowest.com .or
Fax 435-586-0580